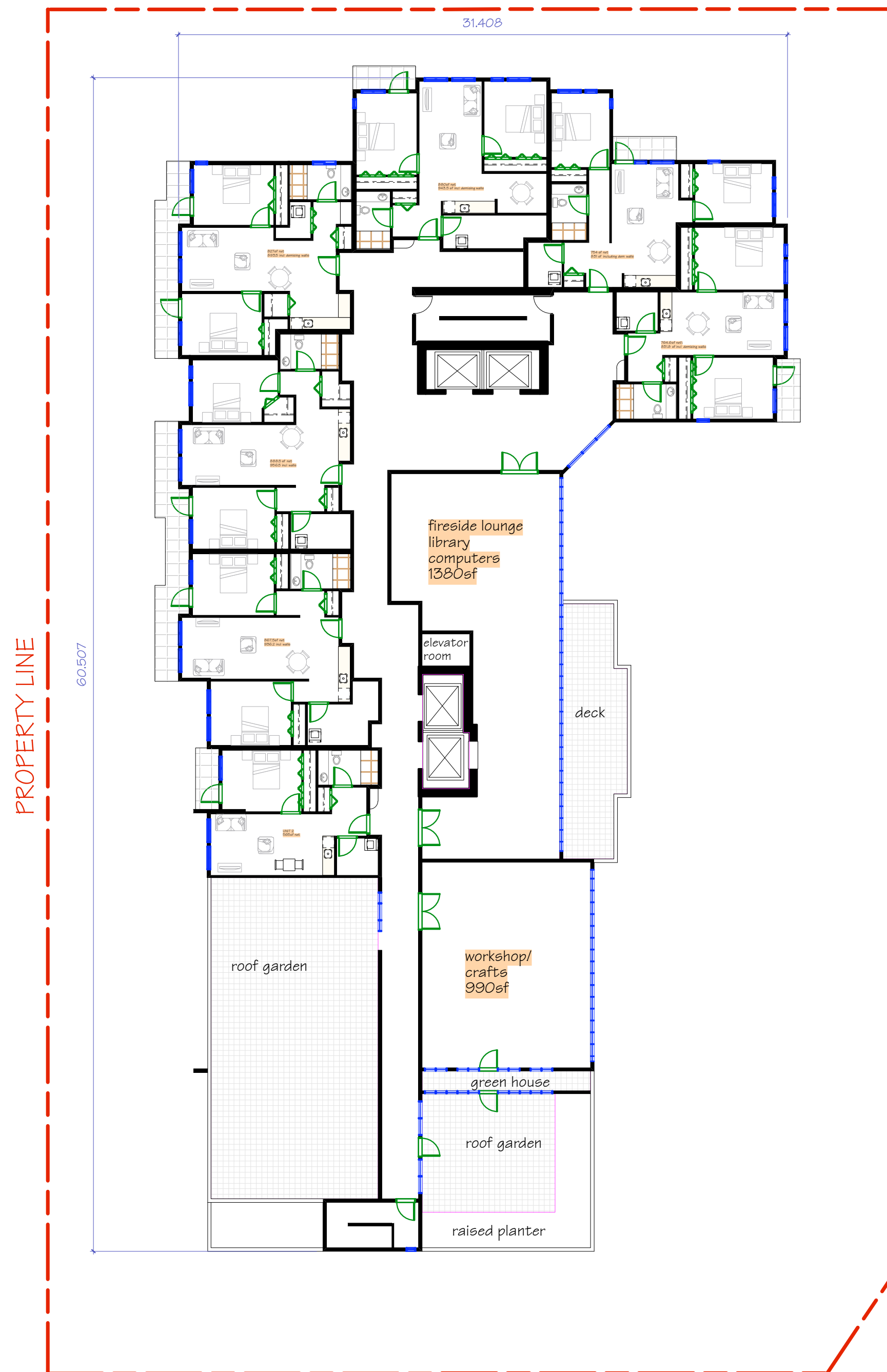
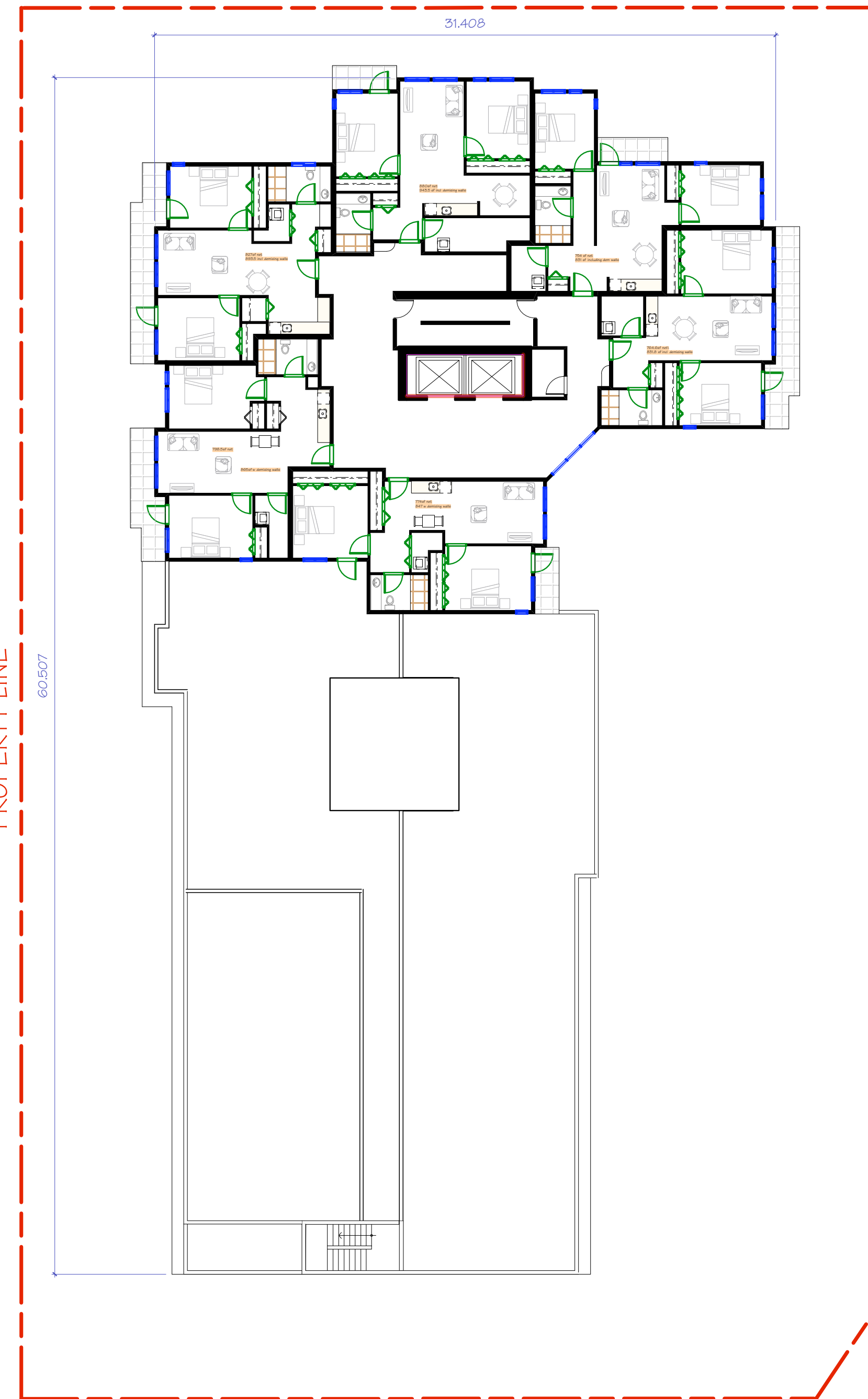


ALL OF THE DOCUMENTS PREPARED BY PRAXIS ARCHITECTS INC. OR ON BEHALF OF PRAXIS ARCHITECTS INC. IN CONNECTION WITH THE PROJECT ARE INSTRUMENTS OF SERVICE FOR THE EXECUTION OF THE PROJECT. PRAXIS ARCHITECTS INC. RETAINS THE PROPERTY AND COPYRIGHT IN THESE DOCUMENTS, WHETHER THE PROJECT IS EXECUTED OR NOT. THESE DOCUMENTS MAY NOT BE USED ON ANY OTHER PROJECT, NOR BE REPRODUCED, WITHOUT PRIOR WRITTEN AGREEMENT OF PRAXIS ARCHITECTS INC. DO NOT SCALE DRAWINGS.

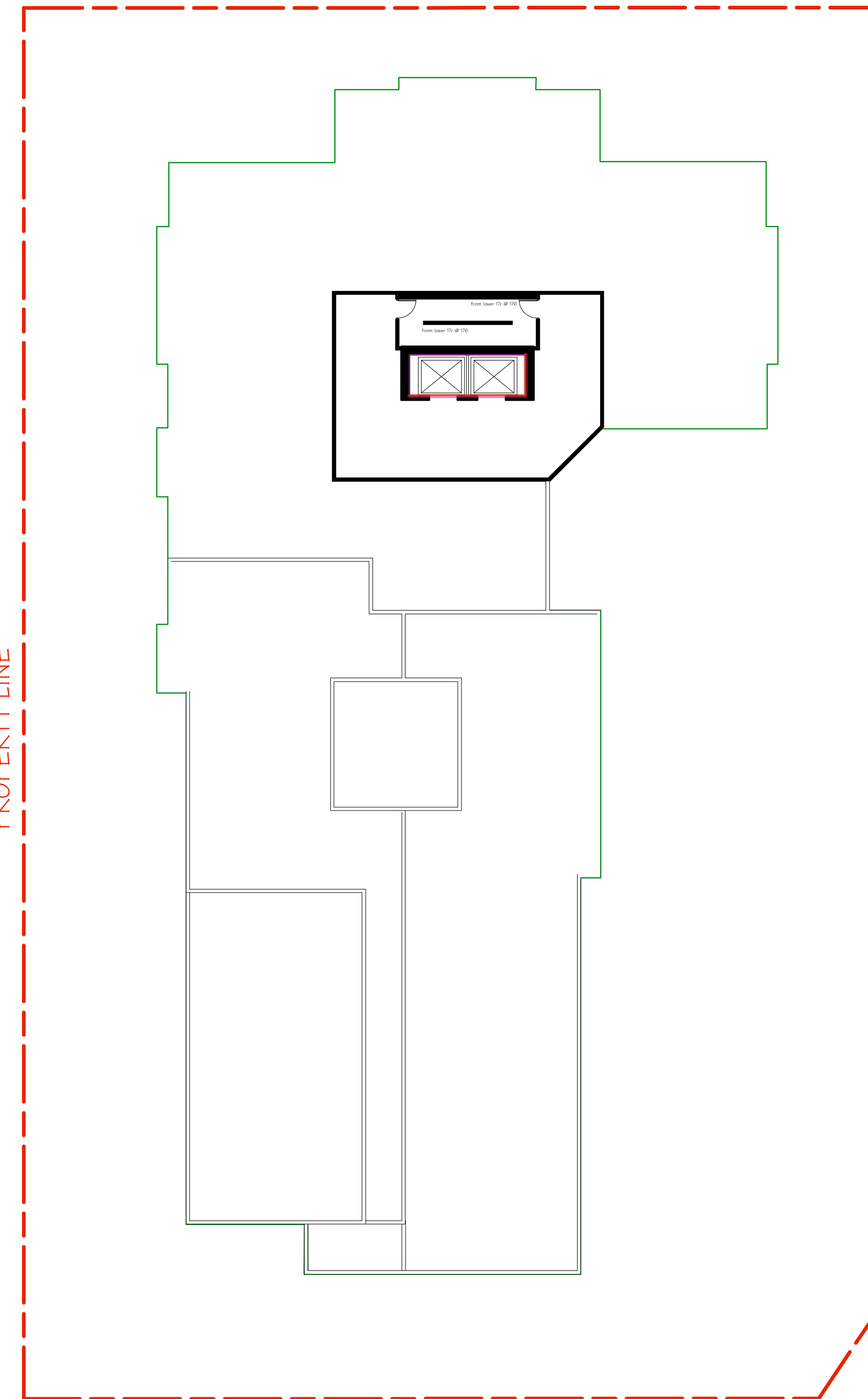
NOTES:



9th FLOOR PLAN



10th, 11th AND 12th FLOOR PLAN



MECHANICAL PENTHOUSE PLAN

| 1 | | |
|-----|-------|-----------|
| NO. | DATE: | REVISION: |

SEAL:



PROJECT TITLE:

LEGION RISE
622 ADMIRALS ROAD
VICTORIA, B.C.

SHEET TITLE:

9TH FLOOR & 10,11,12

| | | |
|--------------------|-----------------------|--------------------------|
| SCALE: 1:200 | DRAWN: TS | SHEET NO: A1.2 |
| DATE: JAN 30/12 | PROJECT NO: 07-146 | |